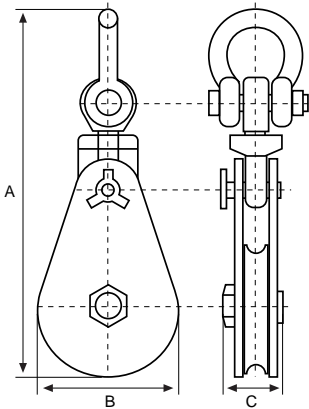


HEAVY DUTY SNATCH BLOCKS

Capacities: 2t - 50t

- Heavy duty construction
- Fitted with grease nipples
- Swivel Shackle head fitting
- Conforms to AS2089-2008



WLL	SHEAVE DIAMETER	WIRE ROPE DIAMETER	A mm	B mm	C mm	UNIT WEIGHT
2 t	75mm	8 - 10mm	290	83	75	4kg
4 t	150mm	10 - 13mm	415	160	75	9kg
8 t	200mm	16 - 18mm	530	210	95	19kg
10 t	250mm	18 - 20mm	680	260	115	35kg
12 t	250mm	20 - 22mm	680	260	115	35kg
15 t	300mm	24 - 26mm	890	310	135	65kg
22 t	355mm	26 - 32mm	960	365	140	90kg
30 t	500mm	32 - 38mm	1230	520	155	210kg
50 t	600mm	44 - 52mm	1585	630	210	400kg

MANUAL SHEAVES & SHEAVE BLOCKS

Capacities: 250kg - 2t

An extensive range of manually operated Sheave and Sheave Blocks has been specifically designed for use with Manilla and Wire Rope. With fully interchangeable sheaves and supplied with either drop forged swivel hooks or eyes, this range comes with becket standard on all single and double blocks.

Bronze bushes and safety latches are standard across the range.



SHEAVE Dia. (mm)	CAPACITY			ROPE Dia.		AXLE Dia. (mm)	BOSS WIDTH (mm)
	SINGLE & SNATCH	DOUBLE	TREBLE	MANILLA (mm)	WIRE (mm)		
63	250kg	250kg	250kg	10	5	12.5	20.5
75	250kg	250kg	250kg	12	6	12.5	20.5
100	500kg	750kg	750kg	16	8	19	25.4
125	1t	1t	1t	20	10	22	29.5
150	1t	1.5t	1.5t	24	12	25	33.4
200	2t	3t	4t	32	16	35	46.5