

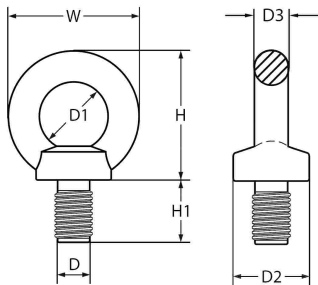
Eye Bolts DIN580 and Eye Nut DIN582 are generally used when a removable lifting point is required. They can also be used as a termination for chain, wire rope or other assemblies.

- Manufactured from carbon steel with a zinc plated finish.
- Only available in metric sizes.
- Each unit is marked with working load limit in tonne, nominal size in millimetres, quality grade and batch number.

EYE BOLT DIN 580



- Conforms to DIN580.
- Proof tested to 2 x WLL and Minimum Break Force is 6 x WLL.
- Test certificates are available on request.

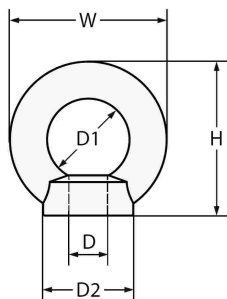


PRODUCT CODE	SIZE mm	PITCH mm	WLL T	WEIGHT kg/pc.	DIMENSIONS mm						
					D	D1	D2	D3	H	H1	W
FEBD08	M8	1.25	0.14	0.06	8	20	20	8	36	13	36
FEBD10	M10	1.50	0.23	0.11	10	25	25	10	45	17	45
FEBD12	M12	1.75	0.34	0.18	12	30	30	12	53	20	54
FEBD16	M16	2.00	0.70	0.28	16	35	35	14	62	27	63
FEBD20	M20	2.50	1.20	0.45	20	40	40	16	71	30	72
FEBD22	M22	2.50	1.50	0.67	22	45	45	18	80.5	35	81
FEBD24	M24	3.00	1.80	0.87	24	50	50	20	90	36	90
FEBD27	M27	3.00	2.50	0.88	27	50	50	20	97	36	90
FEBD30	M30	3.50	3.60	1.66	30	65	65	24	109	45	108
FEBD36	M36	4.00	5.10	2.65	36	75	75	28	128	54	126
FEBD42	M42	4.50	7.00	4.03	42	85	85	32	147	63	144
FEBD48	M48	5.00	8.60	6.38	48	100	100	38	168	68	168
FEBD56	M56	5.50	11.5	8.80	56	100	110	42	187	78	184

EYE NUT DIN 582



- Conforms to DIN582.
- Proof tested to 2 x WLL and Minimum Break Force is 6 x WLL.
- Test certificates are available on request.



PRODUCT CODE	SIZE mm	PITCH mm	WLL T	WEIGHT kg/pc.	DIMENSIONS mm				
					D	D1	D2	H	W
FEND08	M8	1.25	0.14	0.05	8	20	20	36	36
FEND10	M10	1.50	0.23	0.09	10	25	25	45	45
FEND12	M12	1.75	0.34	0.16	12	30	30	53	54
FEND16	M16	2.00	0.70	0.24	16	35	35	62	63
FEND20	M20	2.50	1.20	0.36	20	40	40	71	72
FEND22	M22	2.50	1.50	0.58	22	45	45	80.5	81
FEND24	M24	3.00	1.80	0.72	24	50	50	90	90
FEND27	M27	3.00	2.50	0.70	27	50	50	97	90
FEND30	M30	3.50	3.60	1.32	30	65	65	109	108
FEND36	M36	4.00	5.10	2.08	36	75	75	128	126
FEND42	M42	4.50	7.00	3.11	42	85	85	147	144
FEND48	M48	5.00	8.60	5.02	48	100	100	168	168